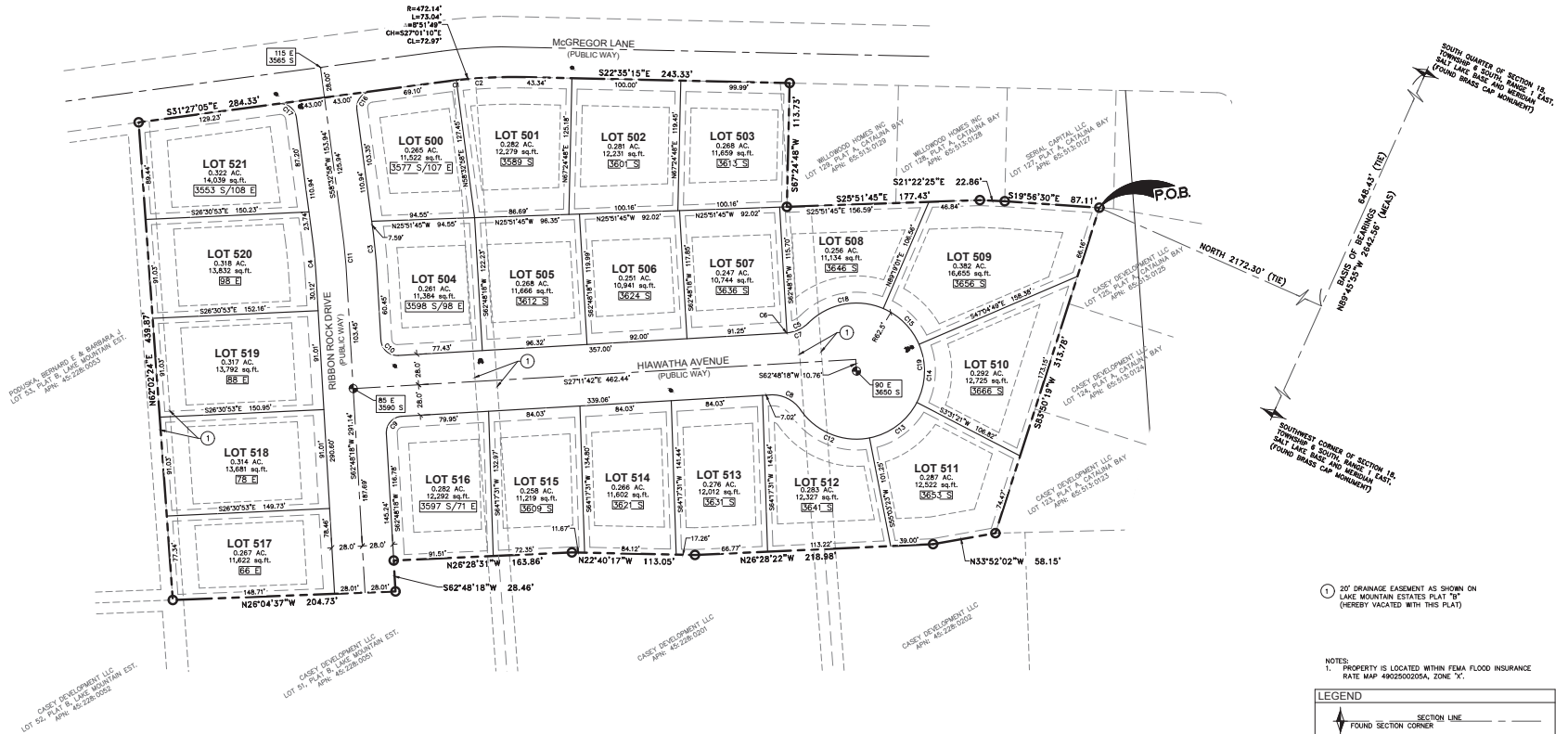


CATALINA BAY SUBDIVISION PLAT "E"

BEING A VACATION OF A PORTION OF LOTS LOTS 49, 50, AND 51,
LAKE MOUNTAIN ESTATES PLAT "B"
LOCATED IN THE WEST HALF OF SECTION 18,
TOWNSHIP 6 SOUTH, RANGE 1 EAST,
SALT LAKE BASE AND MERIDIAN,
CITY OF SARATOGA SPRINGS, UTAH COUNTY, UTAH



Curve Table					
Curve #	Length	Radius	Delta	Chord Bearing	Chord Distance
C1	10.01'	472.14'	112°53'	S37°50'39"E	10.01'
C2	63.03'	472.14'	73°56'	S28°24'44"E	62.98'
C3	41.44'	558.00'	41°52'00"	N60°40'38"E	41.44'
C4	37.29'	502.00'	41°52'00"	N60°40'38"E	37.28'
C5	22.14'	31.50'	40°15'51"	S48°41'22"E	21.68'
C6	0.75'	31.50'	121°14'05"	S27°52'34"E	0.75'
C7	22.14'	31.50'	40°15'51"	S48°41'22"E	21.68'
C8	30.31'	31.50'	59°46'14"	N02°11'29"E	30.91'
C9	23.56'	15.00'	90°00'00"	N72°11'42"W	21.21'
C10	23.56'	15.00'	90°00'00"	S17°46'18"W	21.21'
C11	39.37'	330.00'	41°52'00"	N60°40'38"E	39.36'
C12	72.56'	62.50'	69°31'09"	S01°41'03"E	66.50'
C13	56.21'	62.50'	51°32'00"	S60°40'38"E	54.34'
C14	55.20'	62.50'	50°36'10"	N68°13'16"E	53.42'
C15	47.56'	62.50'	43°36'10"	N02°10'08"E	46.42'
C16	23.56'	15.00'	89°59'57"	N76°27'03"W	21.21'
C17	23.56'	15.00'	90°00'00"	N13°32'51"E	21.21'
C18	74.33'	62.50'	68°08'18"	N34°40'08"W	70.02'
C19	305.87'	62.50'	280°23'49"	N71°22'37"E	80.02'

1 20' DRAINAGE EASEMENT AS SHOWN ON LAKE MOUNTAIN ESTATES PLAT "B" (HEREBY VACATED WITH THIS PLAT)

NOTES:
1. PROPERTY IS LOCATED WITHIN FEMA FLOOD INSURANCE RATE MAP 4902500205A, ZONE "X".

LEGEND	
	SECTION LINE
	FOUND SECTION CORNER
	EXISTING ROW CENTERLINE
	STREET MONUMENT TO BE SET
	FOUND REBAR AND CAP
	SET 5/8 REBAR AND CAP (BOUNDARY LINE) (PER ENGINEERING)
	ADJACENT PROPERTY / ROW LINE
	LOT LINE
	FIRE HYDRANT INSTALLED WITH THIS PHASE
	STREET LIGHT INSTALLED WITH THIS PHASE

